

Startle Reflex

LE 100-00



The STARTLE LE 100-00 is composed by the following units:

- **ACOUSTIC STIMULATION LE 114**
It has three independent devices of generation of acoustic waves:
Two devices of tone: prepulse and pulse
a generator of white noise: Background

Tone Generator

Wave:	Sinusoidal	
Frequency:	from 200Hz to 15kHz	60 - 130dB
	from 15kHz to 20kHz	60 - 115dB
Raise/fall time:	less than 50ms	

White Noise

Frequency:	from 10Hz to 20KHz	60 - 120dB
------------	--------------------	------------

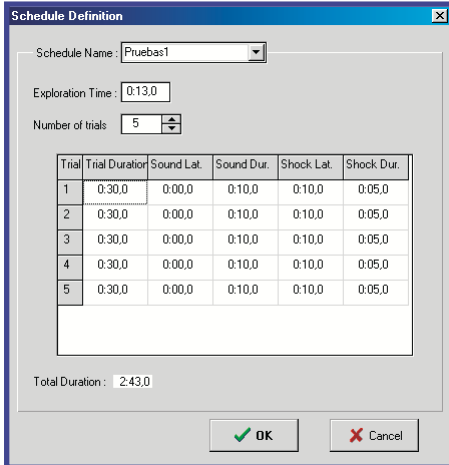
- **SENSOR UNIT LE 115**

System of detection of the convulsions by means of weight transducer. Panlab is pioneering world-wide in this technique.
The sensor includes the Sound-Proof Box and a loudspeaker of high dynamic.

Answer:	Grain calibration
Sensibility:	100mg
Attenuation:	60dB (Sound-Proof Box)

• **START FEAR SOFTWARE**

The Software controls the times of presentation of the stimuli and analyzes the answer of the animal.



Operative System:

Precision time Latency:

Time of stimulation:

Resolution:

Card converter:

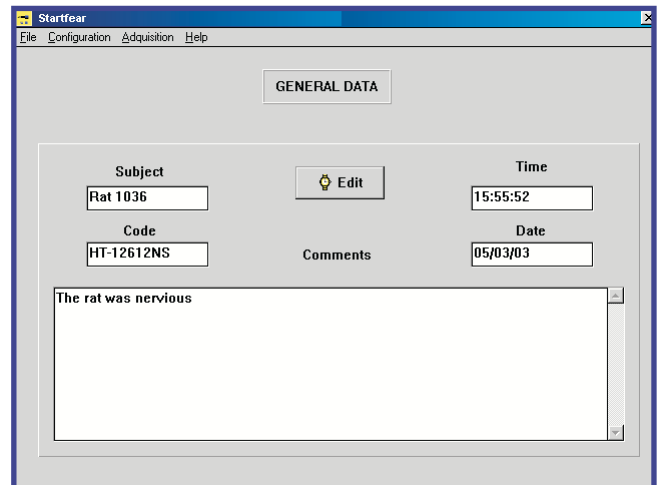
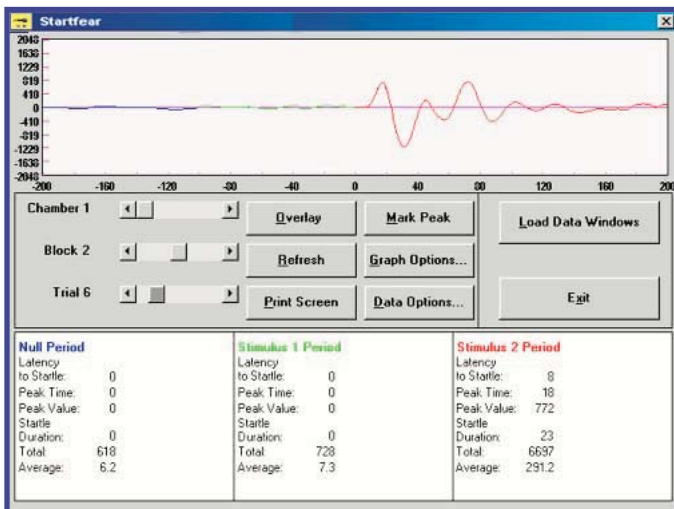
Windows 98 and Millenium.

0,1ms

from 0,1 to 99 seg

12 bits

Slot PCI



The Software calculates: response time (latency), duration of the answer, maximum tip, time of the tip, power of the answer

It selects also the threshold of the answer (suppression of parasites signals, like the breathing or others)