

SELF STIMULATION CAGE LE 855

The SELF CAGE is a complete and compact unit designed for performing basic Operant Behaviour Experiments. In fact, it is a Skinner Box, but instead of including the classical pellet or liquid dispenser, now the reinforcer is an electrical stimulus or the administration of a drug.

Depending on the nature of the reinforcement we can have two different types of boxes:

- 1. The ones where the press of the lever provokes an electrical stimulus.*
- 2. The ones where the press of the lever provokes the administration of a determinate dose of a drug.*



Both systems are autonomous, they do not need any additional device and they work according to the principle of response-reinforcement.

However, they include every electric output necessary for being controlled by another device and perform reinforcement schedules automatically. Such is the case when using the Skinner Pack that is able to control up to 8 cages.

OPTIONS:

- LE 855: SELF CAGE for rats with electrical reinforcement.
- LE 856: SELF CAGE for rats with drug reinforcement.
- LE 857: SELF CAGE for mice with electrical reinforcement.
- LE 858: SELF CAGE for mice with drug reinforcement
- PACKWIN 01: PC software for controlling up to 8 SELF CAGES.

EATURES OF THE LE 855 AND LE 857:

COMPONENTS:

- Lever
- Visual stimuli
- Electric stimulator
- Electric swivel
- Electrifiable grid

FEATURES OF THE LE 856 AND LE 858:

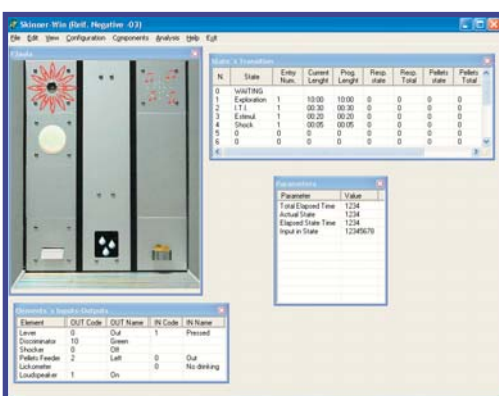
COMPONENTS:

- Lever
- Visual stimuli
- Infusion pump
- Control system for the infusion pump
- Fluid swivel
- Electrifiable grid

PACKWIN Software

PACKWIN is a Software package developed for the Window platform that provides control for up to 8 Skinner Boxes, even when different protocols are used for each one. It is also possible to define other behavioural trials to be programmed in and run on other non-operant Experimentation Boxes. The Software is easy and intuitive to use: its commands and instructions are directly associated with the specific function assigned to them in experimental, non-IT terms or jargon. PACKWIN can also be supplied to order using GLP directives and instructions (GLP option). It is basically comprised of three parts:

1. **TEST.** Enables immediate and reliable checking of the functioning of all the elements of the Skinner Boxes.



2. **QUICK START.** Enables the execution of Basic programmes of Operant Behaviour in a quick and simple fashion:

- Fixed and variable ratio
- Fixed or variable interval
- Fixed or variable DRL.
- Negative Reinforcement
- Extinction

All of the above, with or without the automatic presence of Discriminative stimuli (light or sound).

3. **STATE START.** Allows the user to configure a specific programming in-line with the functioning protocol best suited to end-goals.

Editing is done using the combination of or linking together of Associated states with clearly defined Behavioural situations and allow for highly advanced research programmes to be mapped out. Conflict, Matching to Sample, Progressive or multiple Discrimination, DMTS programmes, among others, are some of the examples of the broad ranging possibilities provided by STATE START. The Software can also be supplied already edited with the client's programme written in (customisation). All data are stored in RAW and ASCII file formats, easily exportable to the most commonly used spreadsheets (Excel,)