

Five/Nine- Hole Chamber

Composed by a Test Chamber, Dispenser, an Interface to connect it to the PC and the PackWin Software



- *Made in Methacrylate, black the rear wall and this containing the holes, and transparent front door and the wall connected with the dispenser*
- *9 holes (that can be converted in 5 covering these not necessities) with internal yellow light and IR detector positioned at 10 mm (rat) or 6 mm (mice) from the entry*
- *Stainless Steel Grid Floor and removable tray*
- *Pellets or Drops Dispenser with access detector*

Ordering Information:

Measures (mm):

LE 509 Rat Hole System
LE 507 Mice Hole System

Chamber:

260 x 260 x 260 (h)
220 x 220 x 190 (h)

Holes:

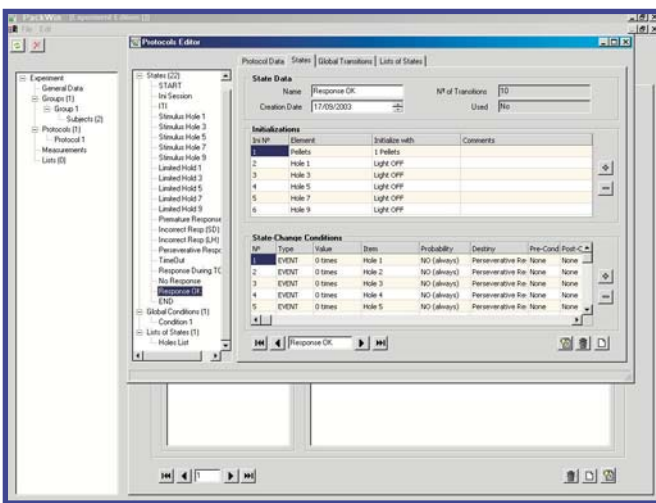
25 x 25 x 35
13 (∅) x 10

PACKWIN Software

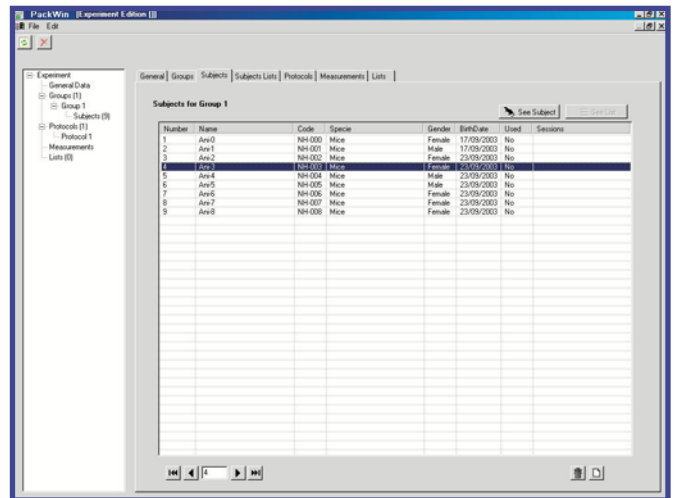
PACKWIN is a Software package developed for the Window platform that provides control for up to 8 Boxes, even when different protocols are used for each one. It is also possible to define other behavioural trials to be programmed in and run on other kind of Boxes.

The Software is easy and intuitive to use: its commands and instructions are directly associated with the specific function assigned to them in experimental, non-IT terms or jargon.

PACKWIN can also be supplied to order using GLP directives and instructions (GLP option).



Protocols can be easily defined by the user according to his needs



Subjects list can be defined before or after the trials

The Software can also be supplied already edited with the client's programme written in (customisation). All data are stored in RAW and ASCII file formats, easily exportable to the most commonly used spreadsheets (Excel, ...)