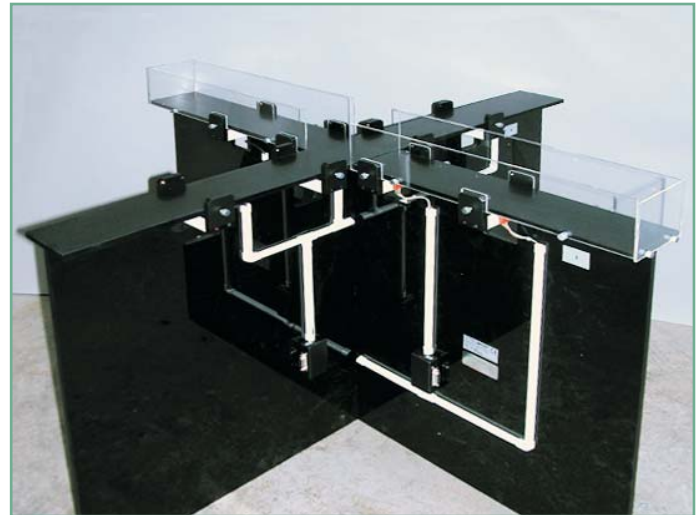


# Elevated Plus Maze

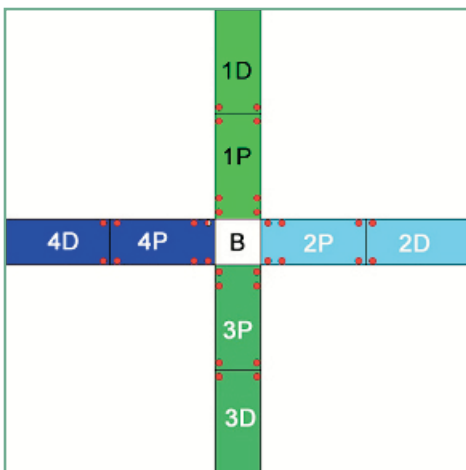
## Experimental Habitable (LE 840 & LE 846, LE 842 & LE 848)

LE 840 & LE 846 (for Rats) and LE 842 & LE 848 (for Mice) are cross shaped mazes. Two pairs of fully interchangeable perspex walls are supplied, to be installed in opposing arms.

In the LE 846 & LE 848, automatic systems, an animal detection system is mounted below the floor. Nine IR detectors are used, 3 in each arm (see fig. above). The detection system is active only when the LE 846 / 848 maze is used with the LE 3846 Controlling Unit.



## The LE 3846 Controlling Unit



The LE 3846 Controlling Unit allows, jointly with the software MAZESOFT-4, for the control of up to two LE 846/LE 848 Mazes and for the programming of the length of the trial. A trial goes on in the controlling system independently of each maze, as soon as an animal is detected into it.

The LE 3846 track the current animal position, according to the 9 sectors (see fig. left) of the maze. Once the trial is over, the following information is provided:

- Total number of sector travelled
- Time spent in each sector
- Number of entrances to each sector
- Sequence of sectors visited (track)

This information is totalised separately for "open / closed" (without / with walls, respectively) arms. Experimental data is permanently stored and battery fed: its integrity is thus guaranteed regardless of the main supply.

### Ordering Information:

LE 840	Elevated Plus Maze for Rats
LE 846	Elevated Plus Maze for Rats with automatic position detection
LE 842	Elevated Plus Maze for Mice
LE 848	Elevated Plus Maze for Mice with automatic position detection
LE 3846	Control Unit for LE 846 / LE 848, with Software for PC (MAZESOFT-4)

### Measurements (cm):

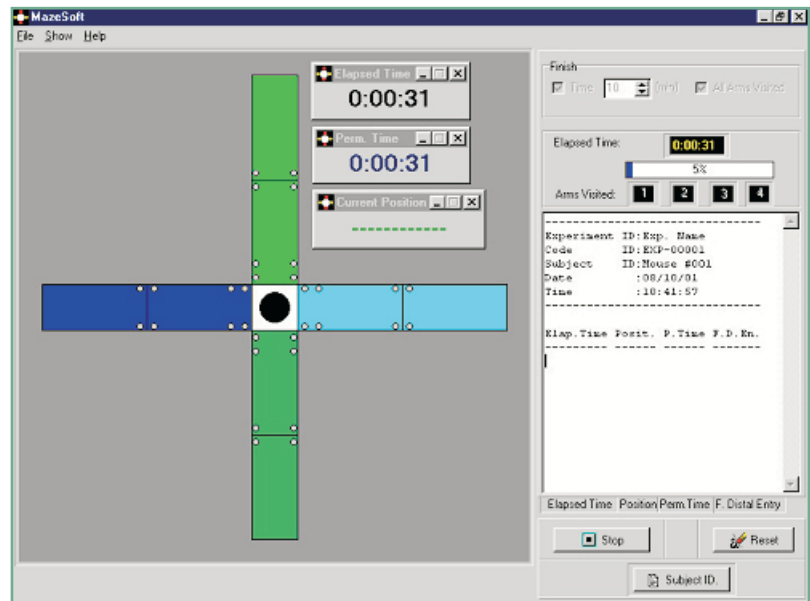
	<u>Mouse</u>	<u>Rat</u>
ARMS:	65 x 6 x 15 (h)	100 x 10 x (50 or 10(h))
Height from floor:	55	75

# Mazesoft - 4

MazeSoft-4 is a program designed for showing the subject position on a four arms radial maze, using a digital I/O card installed in the PC-Computer to ensure communication between both devices. MazeSoft-4 is designed for running only under Windows98®, Windows Millenium®, WindowsNT®, Windows2000® or WindowsXP.

This software ensures the control of the animal's position in the maze, and allows loading up to three specific windows which show additional information of the experiment:

- the total elapsed time in a trial
- the current position of the animal
- the permanence time in a section of the maze.



This information is also showed in numeric format, and can be saved in files for further analysis purposes.

For each trial, the following information is showed:

- Header of the trial (name of the experimenter, code identification, etc.).
- For each arm, the information is separately given for the proximal zone, for the distal zone, and for both of the zones of the arm. Identical information is shown for the base zone in the middle of the Plus-Maze, and the same is done for the union of opposite arms: arms 1 and 3 (with walls), and arms 2 and 4. In all these cases, the following statistics are shown:
  - Number of visits to the zone (or union of zones).
  - Percentage of the number of visits to this zone (or union of zones) in respect to the total number of visits to all the zones.
  - Total time elapsed in a zone (or union of zones).
  - Percentage of the total time elapsed in a zone (or union of zones), in respect to the total time elapsed in a trial.
  - Mean time spent in a zone (or union of zones) for each visit.
  - Same as before, but expressed in percentage in respect to the total time elapsed in a trial.